

SURFACE SUGGESTIONS

PAINTED WALLS

PHOTO TEX SELF-ADHESIVE CAN ADHERE TO VIRTUALLY ALL PAINTS (EXCEPT THE PRO-MAR 200/400 ZERO VOC PAINT). PLEASE FOLLOW THE BELOW WALL PREP PROCEDURE BEFORE ALL INSTALLS. KEEP IN MIND THAT CERTAIN HEAVIER TEXTURED WALLS CAN CAUSE STICKING ISSUES, SO PLEASE TEST IN ADVANCE. WE DO OFFER A NON-OPAQUE HIGH TACK (EX OR EXS) FOR AREAS THAT YOU FEEL MAY REQUIRE A MORE PERMANENT TACK.

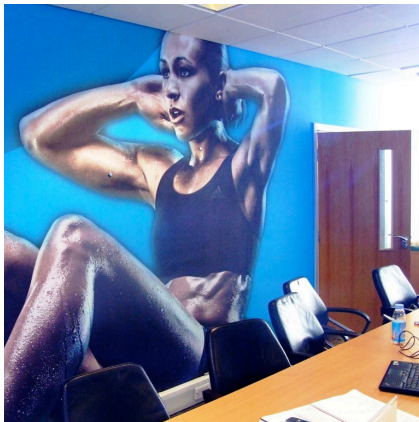


IT IS VERY IMPORTANT THAT YOU ALLOW A NEWLY PAINTED WALL 30 DAYS TO COMPLETELY OUT-GAS. THE GAS CAN TRAP BEHIND THE MATERIAL AND WILL CAUSE BUBBLING.

YOU CAN FIRST TRY TO RUB THE BUBBLE OUT. OTHERWISE, PEEL BACK THE MATERIAL AND LET THE GAS ESCAPE AND RE-APPLY.

INKS

WHEN PRINTING WITH UV LAMPS, MAKE SURE THE LAMPS ARE NOT SET TOO HIGH! "OVER-CURING" THE MATERIAL CAN WEAKEN THE STRENGTH OF THE ADHESIVE. PLEASE TEST ON THE WALL THE TACK OF A PRINTED PIECE BESIDE A NON-PRINTED PIECE. YOU WILL NOTICE THE DIFFERENCE. WHEN USING LATEX INKS, PLEASE KEEP THE HEAT SET AT 190-195 DEGREES, ANY HOTTER CAN CAUSE THE MATERIAL TO HAVE BUBBLES/TUNNELING.



GLASS AND METAL SURFACES

FOR OUTDOOR GLASS, WE NOW RECOMMEND THE (S) PHOTO TEX WHEN USING SOLVENT, ECO-SOLVENT, UV OR LATEX INKS. THIS VERSION IS NOW WATER RESISTANT WITH AN UPGRADED COATING AND WILL LAST A GOOD YEAR OUTSIDE.

FOR AQUEOUS INKS, USE THE ORIGINAL PHOTO TEX VERSION FOR GLASS OR METAL SURFACES.

DO NOT USE THE OPAQUE VERSION ON OUTDOOR GLASS OR METAL. IT CAN LEAVE A RESIDUE (MAINLY IN COLD WEATHER). DO NOT USE ANY PHOTOTEX MATERIAL ON COPPER, BRASS, OR VARNISHED WOOD, AS IT MAY CAUSE ISSUES WITH RESIDUE.

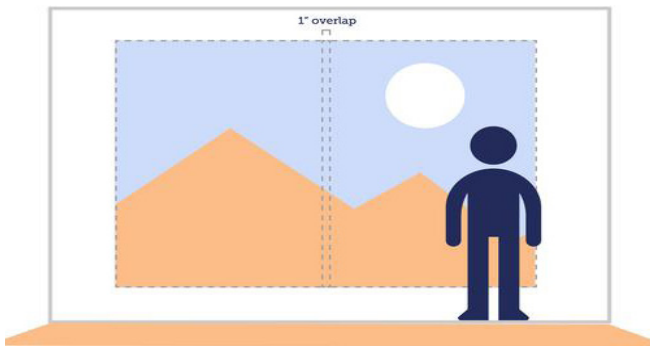
PREP & APPLICATION.

PREP THE WALL



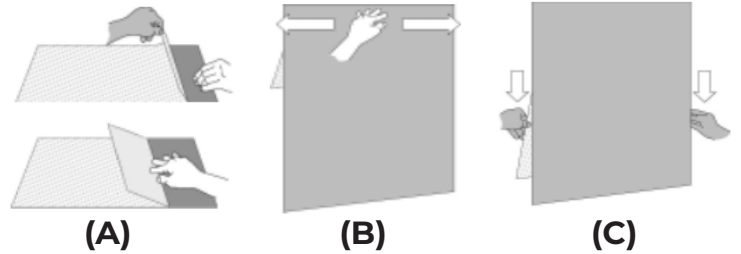
- CHECK THAT THE WALL HAS BEEN PRIMED AND PAINTED. IF NOT, WE RECOMMEND USING THE ROMAN PRO-935 CLEAR ADHESION PRIMER AND ALLOW 24 HOURS TO DRY.
- IF THE WALL WAS RECENTLY PAINTED, PLEASE WAIT 30 DAYS TO MAKE SURE THE PAINT HAS COMPLETELY OUTGASSED.
- **MIX 70% ISOPROPYL ALCOHOL WITH 30% WATER. THE ALCOHOL MUST BE DILUTED OR IT WILL CAUSE ISSUES WITH BUBBLING. MAKE SURE YOU CLEAN THE WALL THOROUGHLY. WAIT UNTIL IT FLASHES OFF (DRIES) AND REPEAT.**

OVERLAPPING



WE SUGGEST A 1" OVERLAP WHEN USING THE OPAQUE VERSIONS. DO NOT TRY TO SPLIT CUT AND BUTT THE OVERLAP WHEN USING THE OPAQUE MATERIAL, IT CAN LEAVE A WHITE LINE. IT IS OK TO SPLIT CUT THE OVERLAP ON THE NON-OPAQUE VERSIONS. BE CAREFUL USING TAPE TO ALIGN THE MATERIAL WITH LATEX INKS. REMOVING IT TOO FAST CAN PULL THE INK OFF.

LET'S APPLY



- BEGIN APPLICATION BY PEELING BACK THE BACK LINER 8-10" AND CREASING THE UNDER-LINER.
 - ALIGN THE MATERIAL ON THE WALL AT YOUR DESIRED STARTING POINT.
 - ONCE IN POSITION, PEEL BACK LINER 6-8" AT A TIME.
- SQUEEGEE THE MATERIAL FROM THE MIDDLE TO THE EDGES. APPLY GOOD PRESSURE DURING APPLICATION.
 - OK TO PEEL AND RE-APPLY TO RELEASE BUBBLES,

TIPS + TRICKS



- USE NON-OPAQUE VERSIONS ONLY FOR GLASS, OR METAL SURFACES.
- USE EXS HIGH TACK ONLY ON SMOOTH FLOORS OR TIGHT WEAVE CARPETS.
- USE THE OPAQUE VERSION WHEN OVERLAPPING/PANELING.
- USE A VERY SHARP KNIFE WHEN CUTTING THE FABRIC.
- RECOMMEND THE OPA OVER THE OPAS WHEN PRINTING ON UV AND LATEX INKS.

SUGGESTIONS

*PHOTO TEX CAN BE RE-POSITIONED MULTIPLE TIMES, ONCE THE ADHESIVE COLLECTS TOO MUCH DUST, DIRT OR FIBERS, IT WILL BECOME LESS EFFECTIVE IN STICKING PROPERLY TO THE SURFACE.

*IF A BUBBLE RE-APPEARS, LIGHTLY RUBBING AND PRESSING CAN REMOVE IT. IF THE BUBBLE RE-APPEARS, THEN YOU WILL NEED TO LIFT THE MATERIAL AND RE-APPLY THIS AREA RELEASING THE TRAPPED AIR.